



# The Regional Authority FrankfurtRheinMain

Structure, Tasks and Services



Regional Authority  
FrankfurtRheinMain



3	Foreword
4   5	The FrankfurtRheinMain Region
6   7	The Regional Authority FrankfurtRheinMain
8   9	Regional Land Use Plan
10   11	Regional Landscape Plan
12   13	Climate, Energy and Sustainability
14   15	Mobility in the Region
16   17	European Office and Advice on Funding
18	Digitalisation
19	Portal for Professionals and Skilled Workers
20	Traditional Orchards
21	Geoportal and Exhibitions
22	Facts and Figures





## Dear Readers,

FrankfurtRheinMain is located in the heart of Europe and is one of the key metropolitan regions from an economic point of view. To remain so requires us to keep moving forward and evolving. The Regional Authority FrankfurtRheinMain therefore sees itself as an initiator, facilitator and driving force. The Authority covers 80 member municipalities and is located at the core of the metropolitan region.

As well as bringing together important stakeholders, the Authority's main task is preparing and updating the Regional Land Use Plan and Landscape Plan. In order to identify regional trends at an early stage, the Authority operates a comprehensive monitoring system. Its work also includes advising member municipalities, for example by drafting individual development concepts. In addition to these activities, the Regional Authority is also home to other important regional representations and offices. Since 2018, for example, it has operated a welcome office for professionals and skilled workers from all over the world. In this brochure you will find information about other important services provided by the Authority.

We welcome ideas and suggestions on how the Regional Authority can become even better as a service provider for the member municipalities and as an administrative office for the metropolitan region. We look forward to hearing from you!



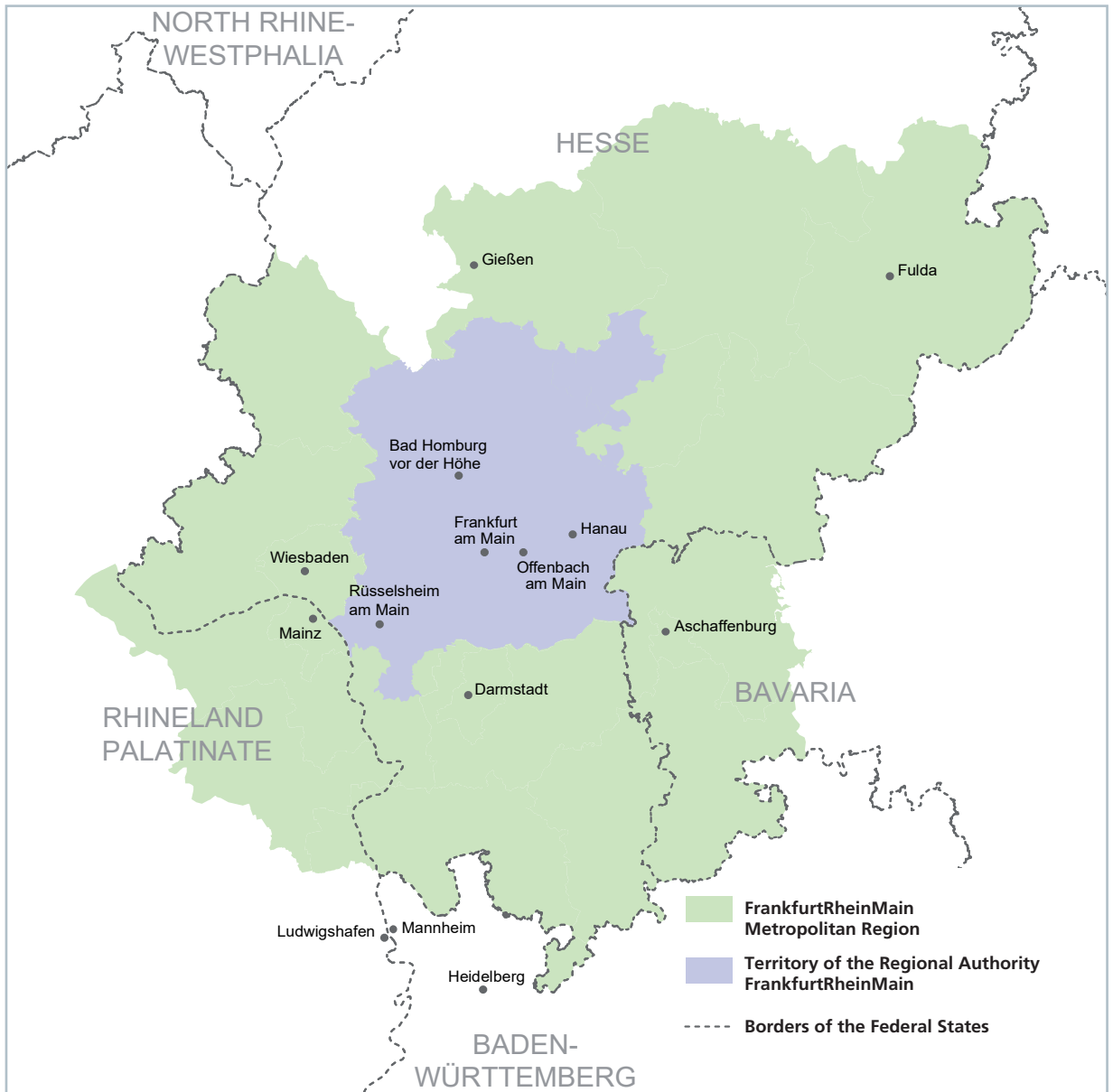
Thomas Horn



Rouven Kötter

Thomas Horn  
Regional Authority Director

Rouven Kötter  
First Deputy Director





The meeting point of the Rhine and Main rivers has always attracted many people. Accordingly, the FrankfurtRheinMain metropolitan centre, with its distinctive skyscraper skyline, is one of the most economically important European regions and gets mentioned in the same breath as the metropolitan areas of London, Paris and Milan. It offers attractive jobs and is an international hub for goods and services, as well as financial transactions and information flows. This makes the region highly dynamic and an economic power house.

One figure that speaks for itself is the metropolitan region's per capita gross domestic product of approx. EUR 46,000, compared to the German average of EUR 38,400. FrankfurtRheinMain is also important as a trade fair venue and academic centre. The people who live and work here are internationally-minded, open and curious, making the region very special. It is dynamic and diverse, with local peculiarities and contradictions.

The region also benefits from its location in the heart of Europe. Its road and rail network links it to the major European centres, the Rhine and Main rivers provide access to European inland waterways, and Frankfurt Rhine-Main Airport is Europe's international air traffic hub – a gateway to the world.

FrankfurtRheinMain also offers a high quality of life with its mix of urban spaces, culture and recreational areas. The region also impresses with its variety of towns and cities as well as its varied landscapes. Not many are aware that the region has four highland areas: the Taunus, Odenwald, Spessart and Vogelsberg highlands. Quick access to the countryside,

numerous excursion and hiking destinations, and the green belt of the regional park underline the city's claim to be a "green region" among Europe's metropolitan regions.

Leisure, culture and quality of life characterise the region today. Hundreds of museums and galleries, two major zoos, many lakes for bathing, open-air and leisure pools, diverse and excellent restaurants, clubs and bars, well over 100 cinemas, more than 100 theatres, cabarets, playhouses and opera houses all cater excellently to a broad range of interests and needs.

The FrankfurtRheinMain region can be divided into two areas: the Regional Authority's area and the FrankfurtRheinMain Metropolitan Region.

The Regional Authority area comprises 80 member municipalities and covers an area of over 2,600 km<sup>2</sup>. It has a population of 2.4 million.

The FrankfurtRheinMain Metropolitan Region, one of eleven metropolitan regions in Germany recognised by the Conference of Ministers for Internal Affairs, is far larger and reflects the region's commuter situation. It spans three federal states (Hesse, Bavaria, Rhineland-Palatinate) with an area of 14,800 km<sup>2</sup>. The metropolitan region is home to 5.8 million people living in a total of 463 municipalities.



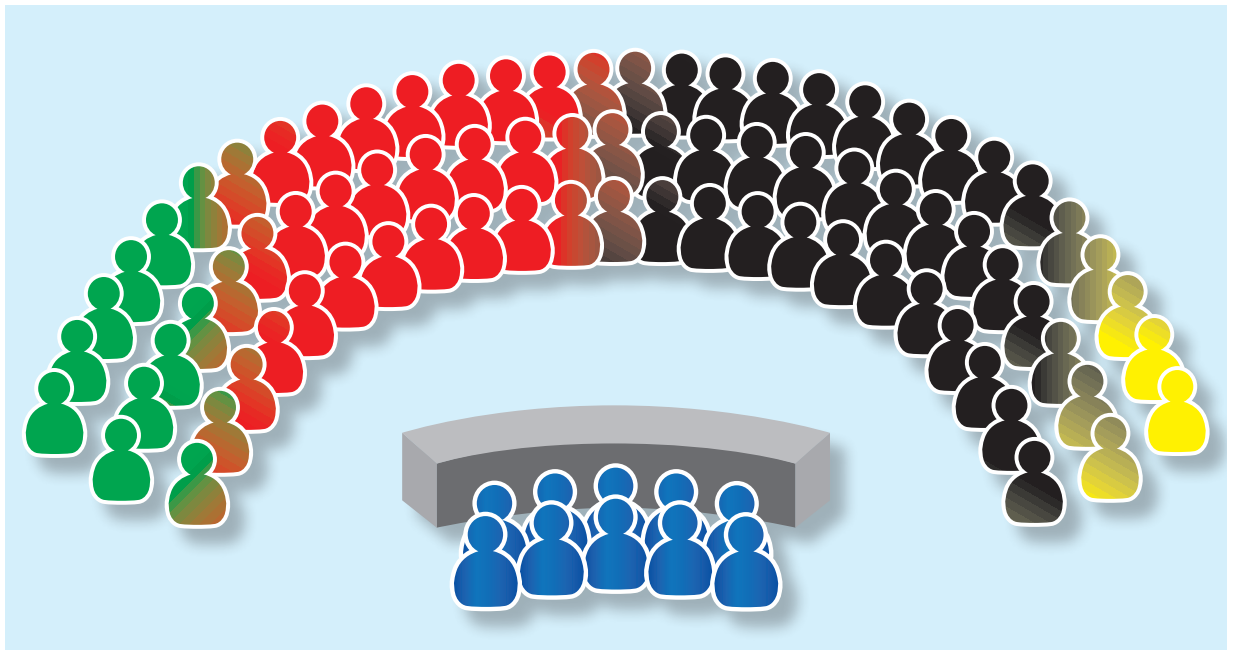


The Regional Authority FrankfurtRheinMain is a special-purpose authority that links local authorities and manages and coordinates regional development. It was established according to a state law, the "Gesetz über die Metropolregion FrankfurtRheinMain", passed on 1 April 2011. The Authority's key task is to develop and update the Regional Land Use Plan (RegFNP) and the Regional Landscape Plan, which is integrated into the RegFNP. To maintain a solid data base for this and to promptly identify developments in the region, the Authority conducts extensive monitoring. It also works on many other topics that contribute to maintaining and improving the region's economic strength and quality of life. Among other things, the Authority's staff develop concepts for modern mobility, support the preservation of traditional orchards, develop digitalisation strategies and the regional energy concept. The Authority also runs a European Office, which is responsible for the FrankfurtRheinMain Metropolitan Region.

The Regional Authority employs around 120 staff and has a budget of approx. EUR 15 million. It is financed by the 80 member municipalities, and currently costs an average EUR 5.66 per capita.

The Authority is managed by a ten-member board, two of whom are full-time. The board is elected by the Regional Chamber comprising 80 representatives from the member municipalities. The Chamber is the supreme decision-making body. The board also includes the district councillors of the districts represented in the Regional Authority as well as the two mayors of the cities of Frankfurt and Offenbach, which are administered as independent districts. Five advisory members come from business associations, trade unions and nature conservation organisations.

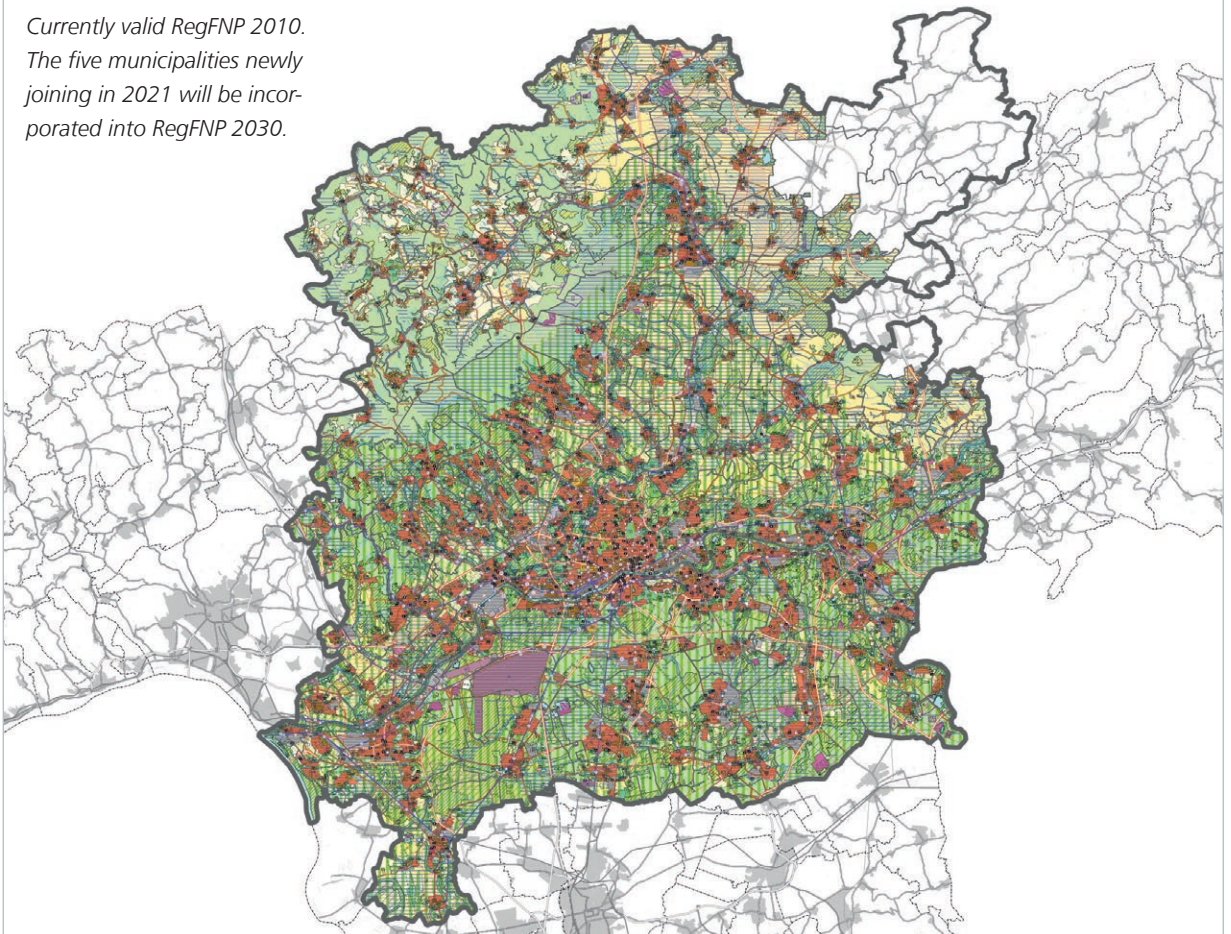
Representatives from surrounding towns and districts are also invited to the board meetings as advisory guests. The concerns of the metropolitan region are therefore also taken into account in the Authority's work. This pools the strengths of the entire region and is the only way the region can steadily hold its own when competing for the best minds, green initiatives, investments and jobs.



The FrankfurtRheinMain region is dynamic and constantly changing with new industrial estates being planned, residential buildings built, green spaces created and infrastructure developed. All this activity is based on the Regional Land Use Plan (RegFNP). It determines how land is to be used and takes into account the requirements of regional planning, i.e., it combines land use planning and regional planning. Preparation and modification of this plan is the core statutory task of the Regional Authority. The RegFNP manages settlement development, transport infrastructure and the safeguarding of open spaces for the Regional Authority's 80 member municipalities. The plan undergoes continuous adaptation to developments and changes over the course of its ten-year term. Regular amendment proceedings demonstrate

the dynamism of our region. The Authority provides planning support and guidance. In autumn 2016, the Regional Chamber decided that a new RegFNP was to be drawn up for the target year 2030. This is a complex process and includes general concepts for the area as well as extensive discussions with representatives of the individual municipalities. It includes examination of whether legend categories need to be supplemented. Furthermore, actual land use is updated using aerial photographs and current data from other authorities and administrations. A new RegFNP is also an opportunity to enable effective management of future challenges such as housing pressures, increased land use, and sustainable energy and raw material supplies.

*Currently valid RegFNP 2010.  
The five municipalities newly  
joining in 2021 will be incor-  
porated into RegFNP 2030.*



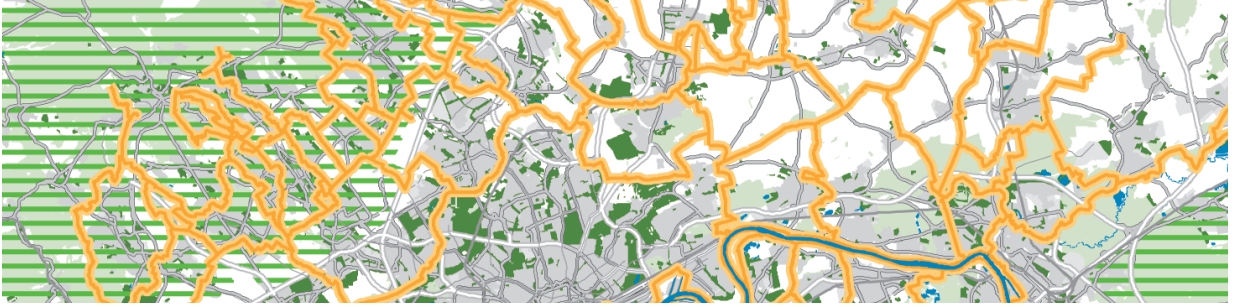




*RegFNP Topics*

## Facts About the RegFNP

- Main RegFNP contents: Settlement structure, transport, utilities/waste disposal/sewage disposal, agriculture and forestry, nature and landscape and securing raw materials.
- It consists of two sections: text and maps. The text section is divided into general and municipality specific subsections and an environmental report. The map sections comprises a main map and two supplementary maps together with a legend.
- It is intended to ensure sustainable urban development.
- It presents the main features of the type of land use and at the same time defines objectives, principles and other regional planning requirements.
- It is a guideline for the local planning of towns and municipalities and other specialised planning.
- It does not have any direct legal effect on citizens.
- It distinguishes between actual and planned situations, enabling potential for building developments to be identified.
- The current RegFNP 2020 has a scale of 1:50,000, the new RegFNP 2030 will have a scale of 1:25,000.



The FrankfurtRheinMain metropolitan area is characterised by a broad range of leisure and recreational opportunities, a moderate climate and a high proportion of open spaces. Together, these provide the area's citizens with a high quality of life. This appeal is a key reason why more and more people are relocating to our region. The new Regional Landscape Plan, which will be integrated into the Regional Land Use Plan (RegFNP), focuses on sustainable development of the region. The Landscape Plan provides for adaptation to climate change, ensures the protection of nature and the landscapes, and creates spaces for local recreation.



The Regional Landscape Plan is one of the Regional Authority's core tasks in addition to preparing the RegFNP. It supplements information on "open spaces"

in the RegFNP and contributes to the sustainable management of open spaces and settlement development.

Information in the Regional Landscape Plan applies to all municipalities in the Authority's area. The plan therefore gives municipalities specific planning information, but also provides information on the broader context of the region. Both the size of the planning area of more than 2,600 km<sup>2</sup> and the region's natural and structural diversity make this plan unique, and its scale of 1:25,000 differentiates it from both the former landscape framework planning used in Hesse (scale 1:100,000) and the municipal landscape planning (scale 1:10,000). When preparing the Regional Landscape Plan together with the new RegFNP, the focus is on developing the core concepts to be integrated into the RegFNP and, therefore, the concepts that will become binding. These include concepts on biotope, landscape, green and open spaces.

### Biotope

The biotope concept protects and develops biodiversity and thus the basis of human life. It aims to sustainably preserve native animal and plant species, their species communities and their habitats. It also involves preserving, restoring and developing functioning ecological interrelationships through appropriate layout and use of the landscape.



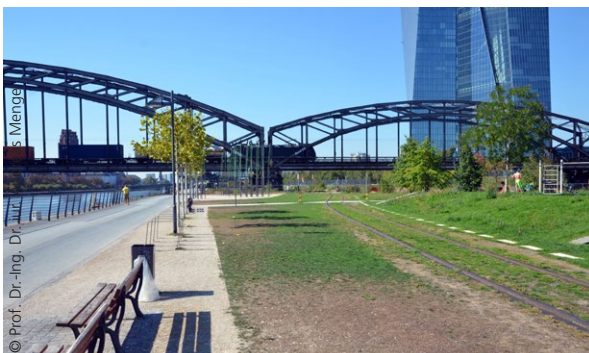


## Landscape

Ronneburg Castle in a picturesque setting, Münzenberg Castle surrounded by rapeseed fields, Seligenstadt's Einhard's Basilica idyllically situated on the banks of the Main, the natural Flörsheimer Schweiz and the huge Mönchbruch in the district of Groß-Gerau, as well as the banks of the Main in Frankfurt between Gerbermühle and Westhafen are all aesthetically pleasing landscapes that are vital to the region's high quality of life.



Areas with such criteria are identified as significant landscapes by an expert report commissioned by the Regional Authority. This report shows the diversity of landscapes in the region with their respective



characteristics and peculiarities. Such significant landscapes are also especially suitable for experiencing nature and the countryside around residential areas and on outings, as well as for local and weekend leisure activities.

## Green and Open Spaces

Parks and allotments, cemeteries and sports facilities in the cities, but also wooded areas or the Hochtaunus and Spessart nature parks, are green and open spaces for leisure and recreation activities. They play a key role in providing a good quality of life. They are also vital for the ecosystem, for example, for storing rain-



water, positively impacting microclimates and air quality, and providing habitats for native species of flora and fauna. Developing a green and open space concept for the Authority's area aims at the long-term preservation of green and open spaces and their functions.





What can we do to protect the climate? What is required to make both energy supplies and resource consumption as efficient and sustainable as possible? These are society's big challenges now and for the future. The Regional Authority is helping to meet these challenges by being a regional platform providing the necessary information, giving impetus to the region, developing strategies and initiatives for the municipalities and coordinating cooperation.

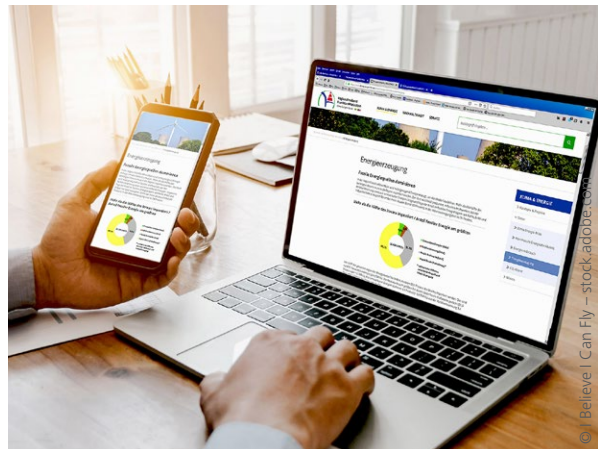
## Climate and Energy

Without a constant supply of energy for electricity, heating, cooling and mobility, modern life would quickly descend into chaos. The energy sector contributes around 76% to global greenhouse gas emissions making it a significant factor in climate protection. The Regional Authority's goal is to ensure the region's sustainable development. It therefore supports member municipalities in intensifying efforts to counteract the climate crisis, while also adapting to the ongoing consequences of a changing climate. Expanding renewable energies and addressing the issues of efficient and economical energy usage also play an important role in the Authority's work.

To promote the sharing of information and experience on all topics related to climate and energy in the region, the Regional Authority has created a climate energy platform.

The platform provides both professionals and private individuals with detailed, comprehensible information on climate change, its effects and climate protection, as well as basic information on energy production and consumption and CO<sub>2</sub> emissions. The data is portrayed spatially in an interactive climate-en-

ergy map. The platform also provides information on what has already been achieved in the individual towns and municipalities. Exemplary projects show



what is possible and encourage the sharing of information and best practice. There is also an initiative (*Energie erleben*) highlighting particularly innovative projects that can be locally experienced.



**KLIMA-ENERGIE-PORTAL**  
Region FrankfurtRheinMain

[www.klimaenergie-frm.de](http://www.klimaenergie-frm.de)





The Regional Authority, together with the city of Frankfurt am Main, wants to enable the entire region to transform itself into a climate-neutral society by 2050. This is an ambitious project that requires the cooperation of a wide range of actors at all levels. A Regional Energy Concept has therefore been developed, which manages cooperation at a regional level under the motto “FrankfurtRheinMain – 100% energy efficient and renewable”.

[www.region-frankfurt.de/energiekonzept](http://www.region-frankfurt.de/energiekonzept)



## Sustainability

The term sustainability means using resources in such a way that future generations have the same opportunities to satisfy their needs as present ones. This also means maintaining a good quality of life and diverse landscapes. Since 2018, sustainability has been enshrined as a state objective in the Hessian constitution and must therefore be taken into account in all state and municipal decision making.

The Regional Authority promotes sustainable development in the metropolitan region through a variety of projects and initiatives, such as its commitment to preserving and maintaining the traditional orchards typical for our region (see page 20).

Documenting and preserving the historic cultural landscape is also part of the Regional Authority's sus-



tainability strategy. If you look closely when walking around the countryside, you'll see evidence of the past such as Roman roads, wayside crosses, sunken paths, justice trees and ice cellars. The Regional Authority has been mapping the historic cultural landscape and its elements since the 1990s. This has resulted in a cultural landscape register for the region, available to anyone interested on our geoportal.

[www.region-frankfurt.de/historischekulturlandschaft](http://www.region-frankfurt.de/historischekulturlandschaft)

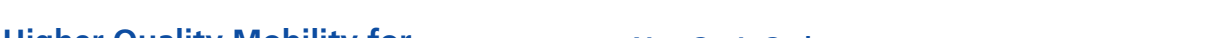


## Fair Region



As a member of the Rhein. Main.Fair association, the Regional Authority supports implementation of the UN's 17 “Sustainable Development Goals”, in the cities, districts and municipalities of the FrankfurtRheinMain Metropolitan Region. The first goal of becoming a fair metropolitan region under the Fairtrade Towns campaign was achieved in spring 2021.

Further steps towards more sustainability and global justice are to follow: activities, training events and campaigning on fair trade, sustainable procurement and education for sustainable development.



The Regional Authority's transport planning activi-

For more than 20 years, promoting cycling has played

sustainable transport option can be reached within a



The packages of measures include strengthening pe-

ing on rail-centred settlement development.





## Making Space for New Mobility: Mobility Hubs

When urban and environmentally friendly modes of transport become more attractive, fewer journeys will be made by private car. While densely populated centres offer a wide range of mobility options, the more rural sub-regions have far fewer. The Regional Authority is therefore looking into mobility-hub requirements at a district level throughout the region. It is also working on creating conditions for their implementation by digitally connecting services and the equally important geographical pooling of environmentally friendly means of transport.

palities in activating or re-commissioning company rail sidings in order to shift more freight traffic back onto the rail. The consultant acts as an intermediary to the relevant bodies and advises on funding.

More information on the Regional Authority's mobility strategy and other measures can be found at

[www.region-frankfurt.de/mostra](http://www.region-frankfurt.de/mostra)



## What Are Mobility Hubs?

Mobility hubs are easily accessible hubs in public spaces, recognisable through a regional, standardised design and are compatible with the locality. They complement existing mobility services with additional services according to demand.

## Rail as the Region's Transport Backbone

A key objective of the Regional Authority's Regional Sustainable Urban Mobility Plan is to strengthen rail as an artery in settlement development. This will help relieve local road networks from motor vehicle traffic. To promote this, a regional rail consultant has been commissioned to advise companies and municipalities on reactivating rail lines and establishing stops. The rail consultant is also supporting munic-





### Regional Policy in the EU

New challenges for society are particularly evident in metropolitan regions. Regional policies and urbanisation, mobility and transport, digitalisation, climate change, sustainable environmental and energy policies, the promotion of research and innovation, and the problems and opportunities of migration – these are all topics that are vital for the development of a region. They are also an essential part of EU legislation and funding programmes. Most EU legislation is implemented by local and regional stakeholders. Participation by regions in the European policy discourse is therefore crucial.

### Strengthening the Role of the Metropolitan Region

Regional interests do not automatically appear on the agenda of the legislature in Brussels. Specific issues need to be repeatedly addressed so as not to become



side-lined. The FrankfurtRheinMain Metropolitan Region therefore has a representation in Brussels, which also brings the European idea back into the region. This task is undertaken by the FrankfurtRheinMain European Office. It lobbies decision-makers in EU bodies on behalf of the region and also participates in EU consultations and hearings. Here, in particular, it is important to actively promote the interests of the metropolitan region in EU policy-making.

### Grants for Good Ideas: Advice on Funding

For the districts, cities and municipalities of the metropolitan region as well as for the regional companies, institutions and associations in FrankfurtRheinMain, it is important to gain funding for their activities and projects. The European Union offers a wide range of





interesting funding opportunities. To obtain funding requires a good knowledge of the EU's programmes and funding structure. A guideline on funding (in German only), summarising the most important information on individual funding programmes, can be downloaded from the European Office's website. The team of the European Office is happy to assist its partners in finding the right funding programmes, as well as providing them with advice or putting them in touch with suitable partners in other European regions or with advisory services. It can also provide support with the application process.

### **The FrankfurtRheinMain European Office** —

The European Office is the link between European stakeholders in FrankfurtRheinMain and the state government, as well as the European Commission and other stakeholders in Europe. It has a head office in Frankfurt and a representation in Brussels located in the Mehr-Regionen-Haus of the State of Hesse. The representation in the heart of the European Quarter in Brussels enables us to represent the interests of our metropolitan region in person and to actively participate in shaping the funding landscape. The FrankfurtRheinMain Regional Authority is the responsible body for the European Office, whose headquarters are also located at the Regional Authority. In addition, the European Office receives support from the districts and cities of the metropolitan region as well as from regional business partners.



[www.europabuero-frm.de](http://www.europabuero-frm.de)

## **LINK TO EUROPE**

**European Office of the Metropolitan Region  
FrankfurtRheinMain**



### **European Office Services**

- We advise you on European funding programmes.
- We promote European projects from and for FrankfurtRheinMain.
- In our monthly "Europa Info" we inform you about interesting news from Brussels.
- We invite you to EU-related policy events.
- We represent your interests in Brussels and actively participate in shaping the European funding landscape.
- We give you access to the institutions and advisory bodies of the European Union.





Digital processes are everywhere and are already influencing our lives in many aspects of our day-to-day lives. This is a technological transformation that offers major opportunities for coexistence and for the economic development of our region. We want to take advantage of these opportunities and help shape them. The Regional Authority is therefore establishing the technical foundations for a Gigabit Region in FrankfurtRheinMain, to roll out fibre glass networks throughout the entire region, and to actively support entry into the digital age with a fully integrated strategy.

### Digitalisation Strategy

As digitalisation permeates and influences every area of our lives, be it work, mobility, consumption or communications, the Regional Authority is working together with its member municipalities to create a digitalised region of the future. Many processes will be made easier and knowledge and information more accessible. This also applies to the structuring of administrative tasks.

The Regional Authority was quick to identify the opportunities and advantages of the digital transformation and integrated them into its activities, for example, through online citizen participation in the planning of cycle superhighways and online statistics tools. The core task of the Regional Authority, the Regional Land Use Plan, has also long since ceased to exist on paper. Participatory procedures and access to digital documents, for example, are now available to everyone online. And it doesn't end there: digitalisation means continuous, rapid and dynamic change, and constantly brings new challenges. Therefore, the Regional Authority

supports municipalities in the metropolitan region by actively shaping the digital transformation within its scope of responsibilities and competence. The Regional Authority wants to start in the here and now with a strategy and concrete ideas and projects, and support the digitalisation process. This includes for example experts conferences, projects in the field of e-governance and Mobility 4.0, as well as the funding advice service which has already been established.

### FrankfurtRheinMain Gigabit Region – Fibre Glass Cables for the Entire Region

Today it is hard to imagine living and working without the internet. Digital processes in society and the economy require a state-of-the-art, high-speed network with full coverage throughout the region.

The Authority therefore launched a regional cooperation project to promote the uniform roll-out of fibre network to the home/building (FTTH/B). A "Letter of Intent" sets the goal of equipping all industrial and service companies, commercial enterprises and half of all private households with fibre-based, gigabit-ready internet access by 2025. By 2030, 90% of all households are to be provided with the technology. In addition to the Authority's municipalities, the municipalities and districts of the metropolitan region are also participating in this project, in cooperation with relevant partners from the private sector as well as with public utility companies in the participating municipalities.



One of the Regional Authority's key tasks is to promote regional development. The Authority contributes in many ways to strengthening the Rhein-Main Region, making it fit for the future when competing for the best minds, green initiatives, investments and jobs.

One of the successful initiatives of the Regional Authority in this context is the portal for skilled workers "Find it in FRM": Due to its central location in Germany and Europe, and its very good transport links, FrankfurtRheinMain has a strong international orientation. So that newcomers can quickly feel at home and get off to a good start while living and working in the region, the Authority, in cooperation with the Frankfurt am Main Chamber of Commerce and Industry, has set up this internet portal to help students, professionals and skilled workers from all over the world find their feet in the region.

It provides information, for example, on the general requirements for working or studying in the region, as well as a comprehensive overview of the most important contact points and services, and therefore shows the way through the complex system of German bureaucracy, which is not always easy.



In addition, the portal provides detailed information, addresses and contacts for all aspects of everyday life in FrankfurtRheinMain, from finding accommodation and childcare to the healthcare system and recreational activities. If any questions remain unanswered, the FRM International Office team, which is based at the Regional Authority, will be more than happy to help.

Germany's  
best place

*find it in FrankfurtRheinMain*

 [www.facebook.com/finditinfrm](https://www.facebook.com/finditinfrm)

 [www.instagram.com/finditinfrm](https://www.instagram.com/finditinfrm)

 [www.linkedin.com/company/finditinfrm](https://www.linkedin.com/company/finditinfrm)

 [www.find-it-in-frm.de/en](http://www.find-it-in-frm.de/en)

*Follow us!*

[www.find-it-in-frm.de](http://www.find-it-in-frm.de)

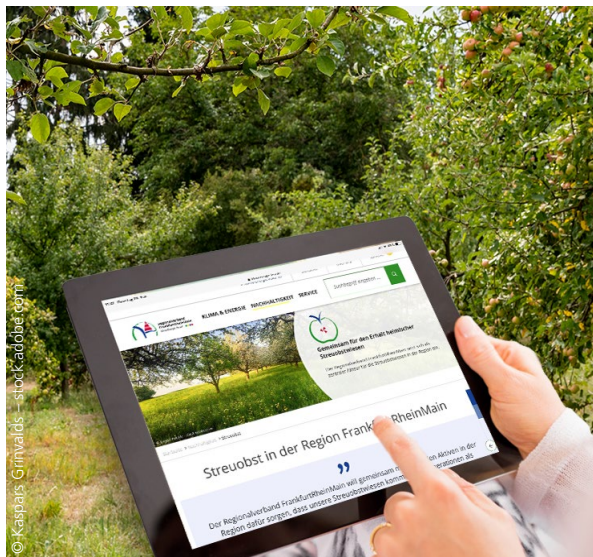




Orchards are one of the most distinctive features of our region's landscape. This is where the apples grow for the world renowned Rhine-Main cider.

They are meadow orchards, managed in a nature-friendly way and planted with high-stem fruit trees. They produce an incredible variety of apples, pears, cherries, quinces and plums. Careful management makes them a habitat for many plant and animal species and they are, therefore, of very high ecological value.

The Regional Authority supports its member municipalities in many ways to protect these traditional orchards.



In 2018, around 90 representatives from cities, municipalities, districts, landscape conservation associations, nature conservation associations and other

interested parties came together for the first FrankfurtRheinMain traditional orchard event. A declaration was adopted in Lohrberg formulating common goals for the sustainable preservation of the traditional orchards in our region. Active implementation of these goals has been taking place since then. Key features are an internet information portal, education and training, combined marketing, a meadow orchard exchange and a database.



[www.streuobst-frm.de](http://www.streuobst-frm.de)

### Der Apfelbote

With its "Der Apfelbote" magazine, the Hessian cider and fruit meadow route informs readers about its activities. Since 2020, the Regional Authority has been responsible for the route thereby supporting the regional marketing for this "Hessian" form of fruit cultivation.

"Der Apfelbote" features many articles about apples as well as an extensive events section. Readers will find tips for excursions and events for all five regional loops of the route. It is available from the route's partners and members and can be downloaded as a PDF from the orchard portal.







## Geoportal

A special feature on the Regional Authority's website is the geoportal, where geodata and maps of the Rhine-Main region can be found. The core component is the RegioMap. Using various tools, you can view the Regional Authority's maps, such as the Reg-FNP, access information and generate map sections as PDF files. Specific questions concerning the development of a municipality can be investigated using analysis tools, for example, on brown site developments of municipalities or for small-scale population monitoring. A building area explorer helps in the search for building plots, an interactive environmental assessment enables the environmental impact of specific individual plans to be assessed, and a statistics viewer can be used to view data in a spatial context.

A cultural landscape register provides information on cultural monuments and cultural-historical landscape elements. A climate-energy atlas provides information on all aspects of climate and energy, ranging from the locations of energy plants to municipality activities such as adapting to climate change.

For those interested in history, there is the "Zeitsprung Rhein-Main" application, which uses texts, pictures and semi-interactive maps to show the development and growth of the region over the last two centuries.

[www.region-frankfurt.de/geoportal](http://www.region-frankfurt.de/geoportal)



## Exhibitions

Four exhibitions can be loaned from the Authority or downloaded from the website:

The Klima braucht Energie (Climate Needs Energy) exhibition presents information on thirteen display panels about the causes and consequences of climate change, energy consumption, saving electricity and energy efficiency, as well as renewable energies such as wind, sun, biomass and geothermal energy.

The Regional Authority has been working on the exhibition series Alltag macht Geschichte (History Made By Daily Life) for several years. It shows how our landscape bears witness to past forms of cultivation, former trade routes, court sites and borders. Working together with local history societies in the member municipalities, small regional histories have also been prepared and integrated into the exhibition. The core exhibition is on permanent display at the Hessenpark open-air museum.

An exhibition on preserving traditional orchards in the FrankfurtRheinMain region shows the ecological and cultural importance of these orchards, their value, the risks to which they are exposed, and how the Regional Authority is helping to protect, preserve and use them.

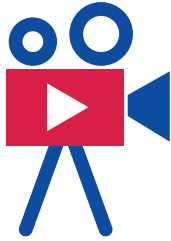
The Wasser im Klimawandel (Water in Climate Change) exhibition provides information about the importance of this resource as well as sustainable water usage.

The Regional Authority also offers its municipalities a mobile information stand on the topic of "mobility" that fits into a bicycle trailer.

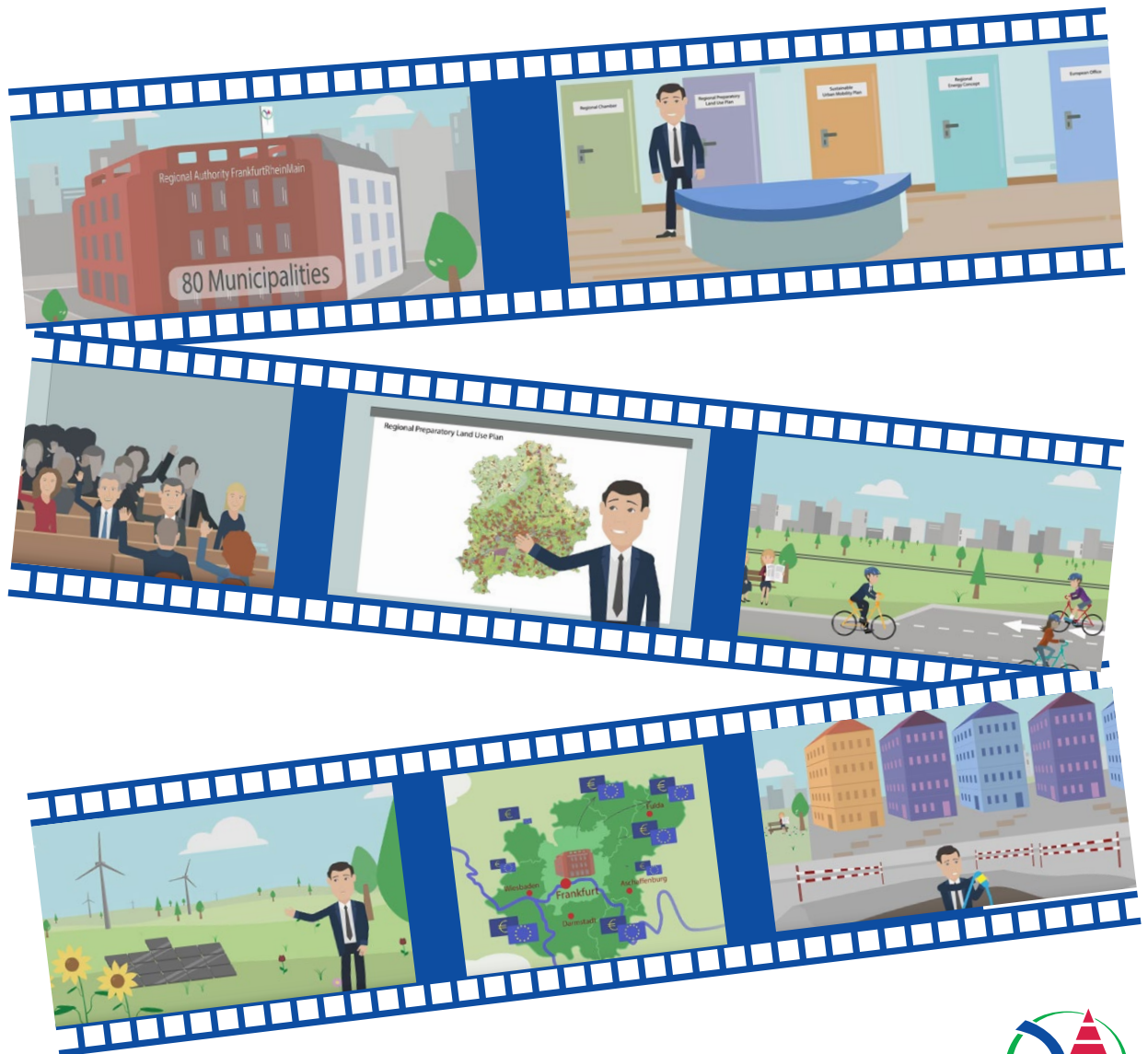


Indicator	Year*	FrankfurtRheinMain Metropolitan Region	Regional Authority FrankfurtRheinMain
<b>Municipalities</b>		463	80
<b>Area (in km²)</b>	2019	14,753	2,674
- Percentage of populated and transport land (in percent)	2019	7.8	27.6
<b>Population</b>	2019	5,808,518	2,431,805
<b>Population density (inhabitants/km²)</b>	2019	394	910
<b>Employees subject to social security contributions</b>	2020	2,435,140	1,213,966
- of which in the service sector	2020	1,888,063	1,008,253
<b>Unemployed (annual average)</b>	2020	171,687	79,176
- Rate (in percent)	2020	5.4	N/A
<b>Gross domestic product (in billion euros)</b>	2016	261	132
- per inhabitant (in euros)	2016	45,591	56,424
<b>Purchasing power index (Germany = 100)</b>	2016	110	115

\* Most recent statistical survey in each case



How does regional planning work?  
What is the Regional Authority FrankfurtRheinMain doing  
regarding the environment, mobility and Europe?  
The video explains what the Regional Authority is  
and what its tasks are.



News is also available  
on our website  
and social media channels:



Regional Authority  
FrankfurtRheinMain





**Publisher**

Regional Authority FrankfurtRheinMain  
Regional Executive Board  
Poststraße 16  
60329 Frankfurt am Main  
[www.region-frankfurt.de](http://www.region-frankfurt.de)

**Contact**

Press, Communications and Marketing Unit  
Tel: +49 69 2577-1251  
Email: [veroeffentlichungen@region-frankfurt.de](mailto:veroeffentlichungen@region-frankfurt.de)

**As at**

October 2022

**Images**

All images, unless otherwise stated:  
Regional Authority FrankfurtRheinMain

**Print**

Wetterauer Druckerei und Verlag, Friedberg (Hessen)